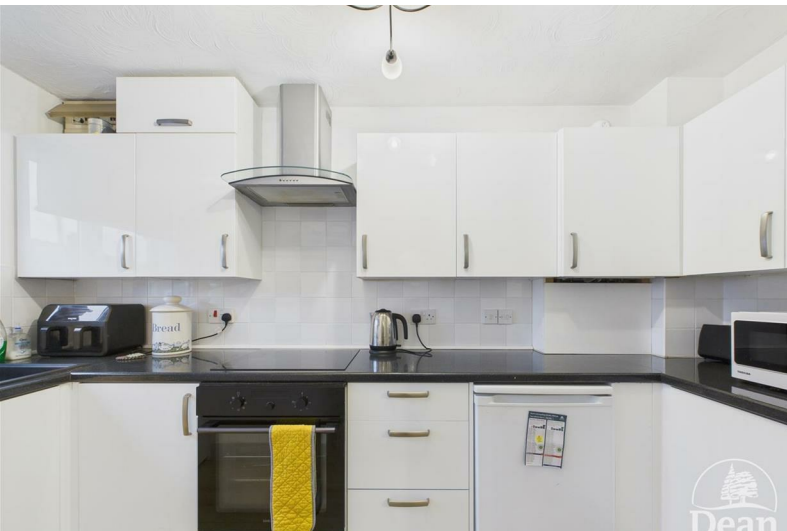




Whitechapel Road

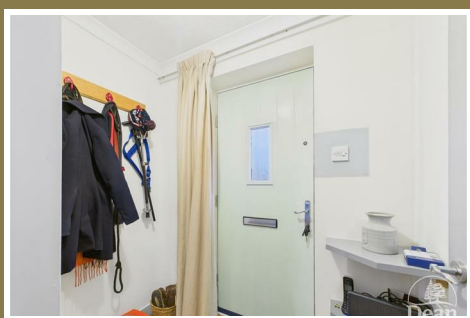
Bream, Lydney, GL15 6LR

£230,000



VIRTUAL TOUR AVAILABLE Dean Estate Agents are proud to offer to the market this well presented two-bedroom semi-detached property on a generous plot, located in the sought after village of Bream. The property offers two double bedrooms and a sizeable living area on the ground floor. To the front is a large driveway for multiple cars and two shed/workshop spaces fitted with power and lighting.

The village of Bream benefits from a post office, doctors surgery, primary school, public house, several shops, library, cricket club and rugby club. Lydney town (approx. 3 miles away) offers a wide range of facilities including a variety of shops, banks, building societies and supermarkets, as well as a sports centre, golf course, hospital, doctors surgeries, train station, primary and secondary schools.



Approached via composite front door into:

Entrance Hallway:

6'1 x 4'1 (1.85m x 1.24m)

Wi-Fi, telephone point, stairs to first floor landing, single panelled radiator, power & lighting.

Kitchen:

8'7 x 12'0 (2.62m x 3.66m)

A range of base & wall units with cupboard housing boiler, pull out understairs pantry storage, electric hob and oven, space & plumbing for washing mashing, two bowl sink and drainer, space for under counter fridge. UPVC double glazed window to front aspect, single panelled radiator, power & lighting. The kitchen leads through into the living room through a double glazed wooden door.

Living Room:

11'11 x 13'4 (3.63m x 4.06m)

Electric fireplace, UPVC double glazed door with surrounding windows to rear garden, power & lighting.

First Floor Landing:

5'9 x 7'11 (1.75m x 2.41m)

Loft access, power & lighting, doors to both bedrooms and bathroom.

Bedroom One:

12'0 x 9'9 (3.66m x 2.97m)

Single panelled radiator, UPVC double glazed window to rear garden, power & lighting.

Bedroom Two:

8'8 x 6'10 (2.64m x 2.08m)

Single panelled radiator, two UPVC double glazed windows to front, built in wardrobe

storage, storage cupboard fitted with radiator, power & lighting.

Bathroom:

5'9 x 7'11 (1.75m x 2.41m)

Single panelled radiator, frosted UPVC double glazed window to side, shower cubicle, W.C., bath with shower attachment, wash hand basin with built in storage, lighting.

Outside:

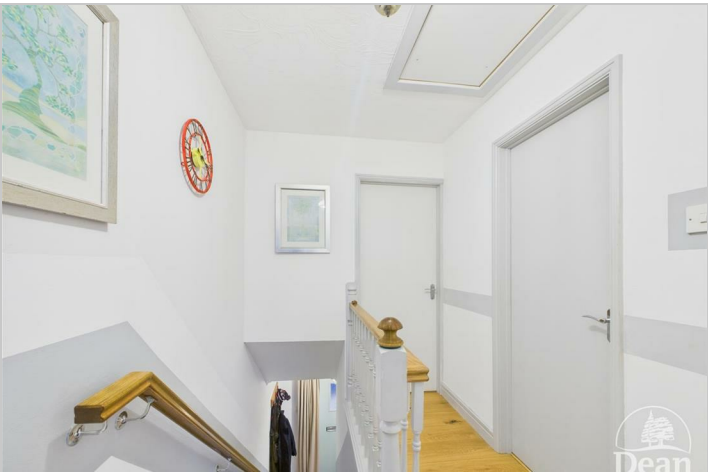
Tiered garden with covered patio area and

storage, decking area with far reaching views and laid to lawn. Shed storage and outside power. To the front of the property there is plenty off road parking for multiple vehicles.

Storage Sheds:

9'4 x 9'11 (2.84m x 3.02m)

Shelved throughout and perfect workshop space, power and lighting.



Consumer Notes: Dean Estate Agents Ltd have prepared the information within this website/brochure with care and co-operation from the seller. It is intended to be indicative rather than definitive, without a guarantee of accuracy. Before you act upon any information provided, we request that you satisfy yourself about the completeness, accuracy, reliability, suitability or availability with respect to the website or the information, products, services, or related graphics contained on the website for any purpose. These details do not constitute any part of any Offer, Contract or Tenancy Agreement. Photographs used for advertising purposes may not necessarily be the most recent photographs, although every effort is made to update photographs at the earliest opportunity. Any reliance you place on such information is therefore strictly at your own risk. All photographic images are under the ownership of Dean Estate Agents Ltd and therefore Dean Estate Agents retain the copyright. You must obtain permission from the owner of the images to reproduce them. Tenanted Property – we are not always able to show the most recent condition of a property due to tenants' privacy and we may choose to show the photographs of the property when it was last vacant to at least allow clients some idea of the internal condition. Therefore, we would of course, urge you to view before making any decisions to purchase or rent the property and before any costs. Energy Performance Certificates are supplied to us via a third party and we do not accept responsibility for the content within such reports. PRC Certificates – Some ex-local authority properties have been repaired in recent years using the PRC Scheme wherein a certificate has been produced by a qualified property engineer. This certificate does not imply the suitability for a mortgage approval and you must satisfy yourself of the work carried out that may meet your lenders criteria. As with leasehold property or new build development sites, you are likely to be responsible for a contribution to management charges and/or ground rent or a contribution to the development service charge. Please enquire at the time of viewing. You may also incur fees for items such as leasehold packs and, in addition, you will also need to check the remaining length of any lease before you complete a mortgage application form. Please ask a member of our team for any help required before committing to purchase a property and incurring expense.

Road Map



Hybrid Map



Terrain Map



Floor Plan

Floor 0 Building 1

Floor 1 Building 1

Floor 0 Building 2

Approximate total area⁽¹⁾

654 ft²
60.8 m²

(1) Excluding balconies and terraces

Calculations reference the RICS IPMS 3C standard. Measurements are approximate and not to scale. This floor plan is intended for illustration only.

GIRAFFE360

Viewing

Please contact our Lydney Office on 01594 368202 if you wish to arrange a viewing appointment for this property or require further information.

Energy Efficiency Graph



These particulars, whilst believed to be accurate are set out as a general outline only for guidance and do not constitute any part of an offer or contract. Intending purchasers should not rely on them as statements of representation of fact, but must satisfy themselves by inspection or otherwise as to their accuracy. No person in this firms employment has the authority to make or give any representation or warranty in respect of the property.